

**Official Monthly Publication of the
Alabama Mineral & Lapidary Society
Birmingham, Alabama**

Website: <http://www.lapidaryclub.com>

President's Message

Hello my fellow rock hounds,
Goodness what a short month this was. Oh yeah, our November meeting is a week early this time. Don't miss it on the FIRST Friday, November 6. We got preempted by a library activity. This could happen again in the next few months so be sure to read your Rockhound Roundup and check the website. www.lapidaryclub.com

Hard to believe another year has already gone by but, sure enough, your dues are about to run out and should be paid up by December. Your promptness will be much appreciated. Next year your promptness will be rewarded with money Dues will go up by five dollars but will be discounted five dollars if paid by the end of December. Two reasons for this: 1) simplify paperwork for the treasurer and membership chairman and 2) SFMS insurance which is figured on membership has to be figured at the end of the year.

As those who attended last month's meeting are aware, the club has renewed our efforts to establish a workshop facility. This was prompted in part by an opportunity to purchase some good quality equipment at a very reasonable price from Ken and Val Keelin. We have now acquired a very nice 10" saw and two 8" grinding outfits. And Mike and Sandra Sullivan have very generously offered us room at their place in Springville to put a shop. We'd love to find a more central location that we can afford. Do you know of anything else available? Meanwhile, the Sullivan's place is only a few minutes off I-59 so I'd be in favor of going ahead with plans there if nothing else turns up soon. I think a used construction trailer with a saw shed built on the side would do nicely. So let's be looking for a trailer or other

President's message continued on page 2.



REGGIE BOLTON
President A.M.L.S.

Nov. 6th - Annual Meeting, Officers sworn in, William Holland Scholarship Speaker 2015
Nov. 21st - Class at Hoover Library 10:30 am
Nov. 28th - Alabama / Auburn Game at Auburn

Dec. 7th - Board meeting Hoover Library 6:30 pm in the break room.
Dec. 11th - Kontzen Scholarship 2016 Winner announced, Christmas gift exchanged
Dec. 19th - Class at Hoover Library 10:30 am
Jan. 8th - Derrick Rayl - 3D Printing
Feb. 26th - Kenneth Kornegay - Oregon Sunstones (due to the annual book sale we have been bumped to the fourth)
Mar. 11th - Tom Talty - Clues ????

Inside ~

President's Message, Program, Calendar Items	Page 1
Slate of Officers, Board Members, Pres. Message Continued, New member	Page 2
Board Meeting Minutes 10/5/15 , Meeting Minutes from 10/9/15	Page 3
Club and Society Shows & Rock Swaps	Page 4
DMC - Fieldtrip, Bd. Meeting continued, Meeting minutes continued, John Gaston says...	Page 5
Brad Smith Bench Tips, Birthstone of the month, Slate of Officers, Rock Sales	Page 6
Our night skies ..., Hoover Library Class	Page 7
Kontzen Scholarship Application	Page 8
Last Page Funnies, Club application	Page 9
Club Information and Mailing wrapper	Page 10

OFFICERS	
President	Reggie Bolton 205-678-8772 reggie@newenvirons.net
Vice President	Larry Hensley 205-937-5810 larry.hensley@gmail.com
Treasurer	Jackie Seale 205-426-5304 jackie51@wildbird.net
Recording Secretary	Bunny Bolton 205-678-8772 reggie@newenvirons.net
Corresponding Secretary	Sandra Sullivan 205-903-7062 doodle35146ss@yahoo.com
Historian	** Vacant at the time **
COMMITTEE CHAIRS	
Editor / Publications	Sandra Sullivan doodle35146ss@yahoo.com
Education Chair	Cindy Hensley hensly.larry@gmail.com
Fieldtrip Chair	** Vacant at this time ** <i>Need some volunteers!</i>
Hospitality Chair	Rhea Proffitt kokomo0114@yahoo.com
Membership Chair	Martha Phillippi 205-967-0889
Program Chair	Larry Hensley hensley.larry@gmail.com
Property Chair	<i>Vacant</i>
Publicity Chair	Diane Lightfoot dlite35124@gmail.com
Show Chair	Cathy Kellogg tanehillgemshow@gmail.com
Webmaster	Steve Adams steve.adams@windstream.net

For more information:
AFMS and SFMS Websites
 The SFMS Newsletter, *the Lodestar*, and the AFMS Newsletter are now available for all members to read on line at <http://www.amfed.org/sfms>. And www.afed.org Email: sfms@amfed.org

Pres. Message Cont'd. from page 1 ... or other portable building. If we can just get over this hurdle, I think we can find a way to deal with management and supervision issues. Then a long time dream for a place to work and learn would be realized.

This then is my final monthly message as president after three years of rewarding service. I look forward to working with our incoming officers and to actively pursuing our club's goals and progress. Thank you to those who have supported and helped me. It has been a good three years for the club, I think, so I hope we can keep up our momentum.
 Reggie Bolton, President AMLS



New Members ...

Let's all extend our hand of welcome to our newest member ~

Carolyn Miller from Birmingham

We have several new members who need to know more about the A.M.L.S. so let's tell them. S.S.

Members Serving on the Board of Directors :	
Diana Carby	205-663-1701 skewdj@bellsouth.net
Karen Williams	205-988-5673 kacwms@bellsouth.net
Southeast Federation Officers :	
President of SFMS	Dave Wayment asstainglass@bellsouth.net
Alabama State Representative to SFMS	Phillip Kaiser kaiserpw@att.net

Board Meeting Minutes for October 5, 2015

In attendance: Reggie and Bunny Bolton, Larry and Diana Carby, Sandra Sullivan, Cindy and Larry Hensley, Karen Williams, and Yvonne Foster.

The trip to the Keelin's home proved that the equipment they were selling was in very good condition. A proposal to purchase it will go to the membership for a vote and to spend money on a workshop and a commitment to use it. Mike and Sandra Sullivan have offered a place on their property for a workshop. The possibility of buying a used construction trailer was discussed as well as the need for 4 to 6 members willing to share responsibility for opening and supervising the shop. Reggie offered to take over treasurer duties while Jackie recuperates. He will contact her about learning the ropes.

The club needs to do a better job of communicating with new and old members.

Cathy Kellogg and Sandra Sullivan are planning to update the Tannehill show flyer.

Website update - All pages are now working. The directory (database) is rarely used and many members don't want their info on it even though it is only visible in the 'members only' area which requires a password to access. It can and should be deleted if there is so little interest. Photos of club functions are requested and need to be taken with a real camera, not a phone, and have captions. There needs to be a link to the facebook page, who manages it? On the Tannehill show application, Cathy Kellogg will ask for a brief description, photos and web link for our website for the dealers type of inventory.

Our demonstration in Moody had low attendance, the Boy Scouts and school kids we expected didn't show up, but the presentation was great. We need to do these more often to get our club in the public eye.

Education update - Classes will be held the 3rd Saturday of the month with sign-up available at meetings. We may need to offer them less frequently. Our attendance has been low and we may need to get a deposit so that *continued on page 5*.

Meeting Minutes for October 9, 2015

John Gaston, with apologies for his bandaged head, blessed our dinner. This was also a good reminder to rockhounds to wear a hat when on a dig. Reggie welcomed visitors Mark Pharo, back after 28 years, and new members Tony West, Nancy Smith and Dru and Tom Chamlf(?)

The slate of officers for the coming year were read: President-Larry Hensley, Vice President / Program Director-John Wild, Treasurer- Jackie Treasurer, Recording Secretary- Bunny Bolton, Corresponding Secretary and Historian-Sandra Sullivan, Tannehill Show Chair- Cathy Kellogg, Webmaster- Steve Adams, Members at Large- Karen Williams and Judith Johnson, Education Chair- Cindy Hensley. Tom Talty moved that the slate be accepted and the motion was passed. Congratulations to the new officers. Our program was given by Gloria Adams. She has served as AMLS President-2 times, Recording Secretary, Tannehill Co-Chair and a Tannehill vendor. Her lapidary skills include wire wrapping, intarsia, stone setting, copper folding and cabbing. Gloria and husband Steve spent January in Quartzite and she interviewed three vendors who are miners: Larry Ridley, John Heusler and Australian Glenn Archer. These miners do a tremendous job digging, making contacts, hauling and transporting so that we can have beautiful rocks. A giant Thank-you goes out to Gloria for bringing us their stories.

Workshop update! Mike and Sandra Sullivan have offered a space on their property in Springville where the club can put a portable building. We now need to research buildings etc. and will also continue to look for a more centrally located place to rent. But prospects in a nice neighborhood with proper zoning within our budget are few. Any members with ideas are welcome to let the board know. A small group of members with machine knowledge will be needed to have responsibility to open the shop for use and certify members for using our equipment. We discussed *continued on page 4*.

Club & Society Shows / Swaps via the Lodestar and Rock&Gem internet listings and newsletters

Oct. 31 - Nov. 1, Plant City, FL Tampa Bay Mineral & Science Club's "Hot Rocks, Cool Gems and Fabulous Jewelry" 10 - 5:00 Florida Strawberry Festival Expo Hall, Plant City, FL Admission: Adults: \$5 - Teens 12-16 & Students with ID \$4 - Kids under 12 free (with parent) Parking: FREE Discounts : Visit our web site for a coupon at www.tampabayrockclub.com Features: Hourly Door Prizes; Silent Auctions; Live Demonstrations; ; Gems & Minerals; Beads; Fossils; Tools & Lapidary Materials; Jewelry & Jewelry Making Supplies. Contact: Jerri Heer, President, Dealer Chair jheerx6@aol.com Judy Anderson, Show Chair - ventana1609@yahoo.com Club Phone: (813)-684-2039.

SFMS 2015 ANNUAL MEETING

November 6, 7 & 8, 2015

SPONSORED BY CANAVERAL MINERAL & GEM SOCIETY

Nov. 7-8 Canaveral Mineral and Gem Society 42nd Annual Parade of Gems Melbourne Auditorium, 625 East Hibiscus Blvd, Melbourne, FL. Sat. 10 - 5, Sun. 10 - 5, Featuring: Gemstones, Minerals, Jewelry, Fossils, Beads, Slabs, Books, Tools, Findings, Pearls, Live Demonstrations, Children's Activities, Silent Auction, Door Prizes, Local Artisans, Vendors, Gem, Mineral and Jewelry Displays. Contact Bill Harr william.h.harr@gmail.com Admission \$4, Children under 12 free

Nov 13 - 15 The 26th Magnolia State Gem, Mineral, Fossil and Jewelry Show The Mississippi Gulf Coast Gem & Mineral Society Jackson County Fairgrounds, 2902 Shortcut Rd., Pascagoula, MS. Fri. 10 - 6, Sat. 10 - 6, Sun. 10 - 5. Gems; minerals; fossils; jewelry; and much more. Two gold/silversmiths doing repairs, several demonstrators doing flintknapping; gold panning; faceting; cutting and polishing stones; beading; and chain making. Meals and snacks available. Several educational exhibits. Admission is \$3.00 for adults,

children 12 & under are free with adult. 3 day ticket available for \$5.00 Contact Bill La Rue, 228-229-8781, wildbill2736@gmail.com for information. The society website is www.mgcgms.org

Nov. 20 - 22 The Columbia, SC Gem & Mineral Society 47th Annual Gem, Mineral, & Jewelry Show Jamil Temple 206 Jamil Rd. Columbia, SC 29210. Fri. 10 - 6, Sat. 10 - 6, Sun. 12 - 5. Jewelry, beads, loose stones, fossils, minerals, gold, silver, & tools for sale Club member's rock collections on exhibit & lapidary demonstrations. Lots of fun for the whole family. S.C. amethyst on display. \$5.00 for adults, children sixteen & under are free with adult. All military & their dependents are free. Club website: www.cgams.org Contact: 803-736-9317 ashrader@mindspring.com

Nov. 27 - 29, Salem, VA 36th Annual Roanoke Valley Mineral & Gem Society Show Salem Civic Center, 1001 Boulevard, Salem, VA 24153. Fri. 2 to 7; Sat. 10 to 6; Sun. Noon to 5. Free Parking. Hobby related exhibitors, Fluorescent Mineral Display, Club member displays, Geode cutting. Admission \$4, ticket good for all three days. Children under age 16 free. Door prizes drawn hourly. Grand Prize drawn 4:30pm Sunday. For further information, CKWLT@aol.com.

Nov. 27 - 29 Mobile, AL. Mobile Rock & Gem Society Show 21st Annual at the Abba Shrine Temple on Hit Rd. Mobile, AL. 36695 One door prize ticket with paid admission See our website for more information 30°40.026'N, 88°13.378'W www.mobileorckandgem.com

Dec. 4 - 6 Cobb County Gem and Mineral Society Show location this year only. Fri. 10 - 6, Sat. 10 - 6, Sun. 10 - 5. Jim R. Miller Park, 2245 Callaway Rd., SW, Marietta, GA 30008-4440 Hourly door prizes. Grab bags on sale for the kids. 30+ dealers. Educational exhibit cases displayed. Show Contact: Mary Ingram, Show Chairman, 770-427-1108 email: mandmingram@gmail.com www.cobbcountymineal.org

For more information concerning kids and rocks, check out this website too!

www.kidsloverocks.com



**Dixie Mineral Club Fieldtrip
An Official Field Trip of the
Gaston Gem, Mineral & Faceters
Club (Host)**

Saturday November 7, 2015

8:30 AM – 4 PM

Propst Farm, Lincoln County, N.C.

(Euhedral corundum crystals in various colors)

FEE \$20pp

Description: Property has and still is yielding corundum, since the 1960's. Owner has recently plowed a "new" small area and is holding it open for the DMC before he replants it. This a brand new area that he has opened for one other small group and us, plus the historical dig area is still opened and will certainly be used by DMC collectors.

Fee: Adult collectors - \$ 20.00 pp, Children 12 years or younger - \$5.00.

Children: Under adult supervision.

Pets: On a leash!

Rain or Shine: This field trip is rain or shine.

Tools needed: Shovel, screen if you have one, maybe small rock pick/hammer (ground/clays very hard and compact), small bucket to collect in. Extra change of clothes and shoes - can be muddy depending on rain amount in the season.

Address: For members only.

Directions: For members only.

Lodging: Rooms are available in nearby Lincolnton NC or Hickory NC.

Contact: Randy Davis - Gaston Gem, Mineral & Faceters Club randybdavis62@yahoo.com
704.915.5646

Indian Henson says ... McCalla Rock sale with fossils, rough, findings, faceted sphalerite, and some miscellaneous items. Make her an offer for all.
india.henson@aol.com

BEGGING here, PLEASE *Someone help me out !!!* We need a good member to take photos at our meetings for the web and this newsletter.



Minutes of 10/9/15 continued ... the purchase of some used equipment including 2 grinding machines, a 10" saw, for \$900.00. Diana Carby moved that the club buy the equipment and the motion passed. Education report – Better attendance is needed to continue this program. We also need more volunteer teachers. The fee for the classes is \$10.00 which goes to the club plus material costs. It would be helpful to know ahead of time about how many will be there so that materials can be ordered and purchased. The question of having non-members attending the classes came up. It is possible that we could charge \$15.00 for non-members and that would go to their membership in the club or join the club and get a free class. Class information could be put on the website too. Cindy Hensley can be reached by e-mail for your ideas or questions at hensley.larry@gmail.com. The member roster will probably be dropped from the website due to lack of interest.

There will be a cabbng opportunity on Nov. 7 from 9 am – 4pm at Don and Jill Hill's home. Pot luck as usual! Respectfully submitted, Bunny Bolton, Recording Secretary *Sorry but there is a*
>> CHANGE ~ NO CABBING PARTY << S.S.

Bd. Meeting Minutes continued

from page 3 ... supplies can be purchased. A specific 'kit fee' class recommended rather than volunteer donations may be necessary.

Respectfully submitted, Bunny Bolton , Recording Secretary



John Gaston says ... Nov. 21st, from 8:30 am - 12:00, 1780 Napier Drive, Hoover 35226. Mary Quan has a big sale of mineral specimens, slabs, rough, fossils, bench grinder, faceting machine, and miscellaneous items. Open to AMLS members and guests. You can come before the Hoover Library class. *Thanks, John*

Brad Smith Bench Tips ~
HOMEMADE WAX TOOLS

Save your used X-Acto or scalpel blades for utility work on the bench. They're wonderful for delicate wax work. Use a cutoff wheel or other type of grinding wheel to shape the blades to what you need. For instance, you can carve away excess metal on the spine to make yourself some narrow carving knives that do a great job of detailing small pierced areas of your waxes.



REMOVING A STONE FROM BEZEL SETTING

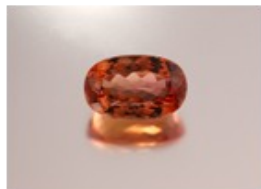
If you've forgotten to use dental floss and got your stone caught in a bezel, there's one thing you can try before starting to pry.

Find some sticky wax or beeswax. Roll it into a pencil-sized cylinder and stick the end onto the top of the stone. Mold it on well and yank. But if the stone is really stuck, there are two other tricks - but each with risks and consequences. The first is to pry open the bezel with a sharp knife blade being very careful not to wrinkle or tear the bezel. If you try this, make sure to pry gently in several passes around the stone.

The last solution is to drill a small hole into the bezel setting from the back side so that you can push the stone out. Note that this does leave a hole, but in some cases you can use it to saw out a design under the stone. www.BradSmithJewelry.com

"Bench Tips for Jewelry Making" and "Broom Casting for Creative Jewelry" are available on Amazon.

TOPAZ and CITRINE ~ Birthstones for November ~ Two gems are appropriate for November birthdays



Reprinted with permission from the American Gem Society Source : www.americangemsociety.org

Slate of Officers For 2016 —

President	- Larry Hensley
Vice President	- John Wild
Treasurer	- Jackie Seale
Recording Secretary	- Bunny Bolton
Corresponding Secretary	- Sandra Sullivan
Historian	- Sandra Sullivan
Editor / Publications	- Sandra Sullivan
Education Chair	- Cindy Hensley
Hospitality Chair	- Rhea Proffitt
Program Chair	- John Wild
Property Chair	-
Publicity Chair	-
Show Chair	- Cathy Kellogg
Webmaster	- Steve Adams
Members on the Bd.	- Judith Johnson
	- Karen Williams

*** ROCK SALES ***

*** ROCK SALES ***

*** ROCK SALES ***

*** ROCK SALES ***

1. 11/21/15 **Mary Quan** sale at 1780 Napier Drive, Hoover 35226 8 am to 12. see page 5.
2. 11/11/15 **Vara and Rigdon Hitchcock** at 5105 So Broken Bow Off Hwy. 119 PRICES CUT Extras available, Call before Wed. 991-6378 or 902-1498
3. *Beginning NOW* ~ **Zackary Winkle** says make him a good offer for rocks and machinery. Shelby Cty. airport 301 Crisfield Circle 256-609-1157 zackerywinkle@yahoo.com Having a yard sale
4. **Steve Tyson** ~ 1190 Pierson Chapel Rd. Alexander City Rocks, Equipment for sale, Only come in as a group (10 at a time) Huge outside display, Sign a waiver (it's worth it S.S.), See flyer for directions styson2006@gmail.com , *prescheduled*.
5. **India Henson** ~ Mc Calla india.henson@aol.com Miscellaneous items from an inherited collection.

Our Night skies ...

Late night November 4 until dawn November 5, 2015, the South Taurids

Fortunately, the full moon will wash away all but the brightest South Taurid meteors. The meteoroid streams that feed the South (and North) Taurids are very spread out and diffuse. That means the Taurids are extremely long-lasting (September 25 to November 25) but usually don't offer more than about 7 meteors per hour. That is true even on the South Taurids' expected peak night. The Taurids are, however, well known for having a high percentage of *fireballs*, or exceptionally bright meteors. Plus, the other Taurid shower – the North Taurids – always adds a few more meteors to the mix during the South Taurids' peak night. *In 2015, the slim waning crescent moon coming up before dawn will not seriously obtrude on this year's South Taurid meteor shower. The South Taurids should produce their greatest number of meteors in the wee hours – between midnight and dawn – on November 5. Remember, it'll be possible to catch a fireball or two!*



Late night November 12 until dawn November 13, 2015, the North Taurids

Like the South Taurids, the North Taurids meteor shower is long-lasting (October 12 – December 2) but modest, and the peak number is forecast at about 7 meteors per hour. The North and South Taurids combine, however, to provide a nice sprinkling of meteors throughout October and November. Typically, you see the maximum numbers at around midnight, when Taurus the Bull is highest in the sky.

Taurid meteors tend to be slow-moving, but sometimes very bright. *In 2015, the new moon comes only one day before the predicted peak, providing a dark sky for the 2015 North Taurid shower.*

Late night November 17 until dawn November 18, 2015, the Leonids

Radiating from the constellation Leo the Lion, the famous Leonid meteor shower has produced some of the greatest meteor storms in history – at least one in living memory, 1966 – with rates as high as thousands of meteors per *minute* during a span of 15 minutes on the morning of November 17, 1966. Indeed, on that beautiful night in 1966, the meteors did, briefly, fall like rain. Some who witnessed the 1966 Leonid meteor storm said they felt as if they needed to grip the ground, so strong was the impression of Earth plowing along through space, fording the meteoroid stream. The meteors, after all, were all streaming from a single point in the sky – the radiant point – in this case in the constellation Leo the Lion. Leonid meteor storms sometimes recur in cycles of 33 to 34 years, but the Leonids around the turn of the century – while wonderful for many observers – did not match the shower of 1966. And, in most years, the Lion whimpers rather than roars, producing a maximum of perhaps 10-15 meteors per hour on a dark night. Like many meteor showers, the Leonids ordinarily pick up steam after midnight and display the greatest meteor numbers just before dawn. *In 2015, the rather wide waxing crescent moon sets in the evening and won't interfere with this year's Leonid meteor shower. The peak morning will probably be November 18 – but try November 17, too.*

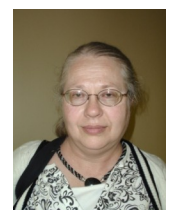
<http://earthsky.org/astronomy-essentials/earthskys-meteor-shower> By [Bruce McClure](#) and [Deborah Byrd](#) in [Tonight | Astronomy Essentials](#) | [Space](#) on Oct 06, 2015

HOOVER LIBRARY CLASS

The Hoover Library class will start at 10:30 am and last until 5:30 pm. These classes are held down stairs in the class rooms and you can access them by way of the stairs or elevator just inside the front door to your right. The plan is to have some different types of jewelry designs that have not been offered before at the class. If you need to come in later or leave early, no problem.



Cindy Hensley



Yvonne Foster



Alabama Mineral & Lapidary Society

Application for the Joe and Frances Kontzen Scholarship

Name _____ Date _____

Address _____

City _____ State _____ Zip _____

Telephone _____ Email _____



Number of years you have been a member of AMLS? _____

Do you regularly attend meetings? _____

Do you volunteer to help with the Tannehill Show in June? _____

Do you attend fieldtrips? _____

Have you ever attended one of the SFMS schools/classes at William Holland in Young Harris, GA or Wildacres Retreat in Spruce Pines, NC before? _____

Would you be willing to teach or demonstrate a workshop skill at an AMLS club meeting after returning and write a brief article for the newsletter about your class? _____



If you are submitting this application at a club meeting, please fold in half and place it in the basket on the sign-in table by the door.

If you are printing this from the website for the Alabama Mineral & Lapidary Society, please mail to:

Sandra Sullivan
P.O. Box 1067
Springville, AL. 35146

Received _____

Last Chance ~ This application must be turned in by the close of the November meeting to be eligible for the scholarship!

Last page funnies ...

Rock Jokes

Q: Where do pebbles grow up?

A: In the rockery!

Q: Where do rocks sleep?

A: Bedrock.

Q. Why did the aquamarine replace the bloodstone?

A. People were tired of seeing all of those bloody spots.

Jeweler Jokes

Q. Where do you find the President of the jewellery company?

A. He's the one in the Opal Office.

Q. What did the jeweller say to the alien?

A. I have something for all your lobes.

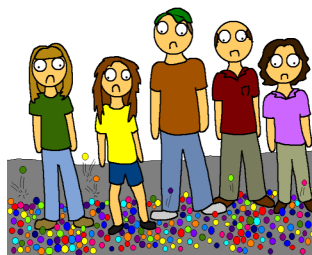
Q. What did Mr Rabbit give Mrs Rabbit?

A. A 14 Carrot Gold Ring.

How Do You Become a Rockhound?

Buy a large bag of marbles and carry it with you whenever you go looking for rocks. Every time you pick up a rock and put it in your pocket, take out one of the marbles from the bag and throw it over your left shoulder.

Any time you see one of your marbles, pick it up along with the rock nearest to it - the rock goes in your pocket, the marble into the marble bag. When you have finally lost all of your marbles, you are a rockhound!



OFF the INTERNET : <http://hubpages.com/art/Lapidary-Jokes-For-The-Discerning-Rockhound>

A.M.L.S. Application for Membership _____New _____ Renewal

NAME (S) _____

ADDRESS _____

CITY _____ STATE _____ ZIP _____

HOME PHONE _____ WORK PHONE _____

E-MAIL ADDRESS _____

Family \$20. _____ Single \$15. _____ Junior / Student _____ After June 1, the cost of the membership dues are one-half price for new members only. **Dues for regular members are to be renewed at the November meeting and / or before January 1 of the new year.**

Please make checks payable to the **ALABAMA MINERAL & LAPIDARY SOCIETY** and mail to P.O. BOX 1067 SPRINGVILLE, AL. 35146

Meeting Date: Second Friday of each month except for the month of June. The Tannehill Show takes the place of the June meeting.

Meeting Place: Emmet O'Neal Library 50 Oak St. Mountain Brook, AL. 35213 PH. (205) 897-0459

Website: info@eolib.org

Meeting Time: 6:30 p.m.

Date Received _____

Visitors Welcomed !



Zachary Winkle says make a good offer. Directions: Take I-65 So to the Shelby Cty. Airport exit #234 **Turn LEFT** at the end of the off ramp onto Cty. Rd 87. Go about ¼ mi. and **Turn RIGHT** at the traffic light onto Smokey Rd. Go ½ mi. **Turn RIGHT** into **Chesapeake Subdivision**. At the first stop sign **Turn RIGHT**. 301 Crisfield Circle is the third house on the right. 256-609-1157 zacharywinkle@yahoo.com



Vara & Rigdon Hitchcock says **prices are cut!!!** 5105 So. Broken Bow Dr. and the corner of Chickasaw Lane in Broken Bow subdivision off Hwy. 119 So. 2.3 mi. from Hwy. 280 going toward Pelham near Briarwood High School (NOT located in BROKEN BOW SOUTH SUBDIVISION) 205-991-6378 **Turn** off Hwy. 119, go to stop sign, **Turn RIGHT** onto N. Broken Bow, go to the 3rd stop sign, **Turn LEFT** onto So. Broken Bow. Grey-green house with bright yellow front door. **Extras now available**, Call before Wed. 11/11/15 991-6378 or 902-1498



John Gaston says Saturday Nov. 21st 8 am to 12 pm for the Quan sale. There are boxes and boxes of specimens, large variety of cabinet specimens, fossils galore, quartz from Pahupaqui Mine, amethyst, palm wood, variety of slabs, cabochons, rose quartz, geodes, picture jasper, larvikite, pyrites, petrified wood, ammo boxes, used gold filled wire for wirewrapping projects, and much, much more.

Located at 1780 Napier Dr. Hoover Directions: From Hwy. 31 So. **Turn** onto Patton Chapel Rd. then **turn LEFT** onto Conley Drive. Then **jog LEFT** onto Charliotte Dr. Continued to Paulette Dr. You **turn RIGHT** onto Paulette Dr. Continue to the "t" intersection when you **turn RIGHT** onto Napier Dr. The rock sale will be at the third house on your right. Contact John Gaston for more information at 907-5648 or gastons3@bellsouth.net .



Steve Tyson says his father was one of the founders of the Lake Martin Rock & Gem rock club. He has large equipment and a huge variety of rocks outside for sale. Directions: Head south on Hwy 280 to Kellyton, AL. **Turn LEFT** at the Exxon on the **LEFT** which will be Washington St. Go 2 miles and **turn LEFT** onto Pierson Chapel Rd. Here there is an older white storefront building on the left with a 2 lane road beside it (easy turn to miss). Railroad tracks will be on your right. Travel .2 mi. to **1190 Pierson Chapel Rd. with be on your LEFT**. Steve says we need to come in as a group of no more than 10 at a time; we need to schedule ahead of time; we have to sign a waiver; and the machines will be accessible. styson2006@hotmail.com





SANDRA SULLIVAN, EDITOR
 P.O. BOX 1067
 SPRINGVILLE, AL. 35146

STAMP

*If undeliverable, please return
 to the address above.*

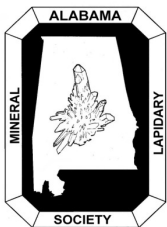
**IMPORTANT
 CHANGE !!!**



Meeting: Friday night Nov. 6, 2015
Place: EMMET O'NEAL LIBRARY
50 Oak St. Mt. Brook, AL. 35213
205-897-0459 info@eolib.org
Time: 6:30 pm gathering and fellowship
And food. 7 pm Program

MAILING LABEL

ALABAMA MINERAL & LAPIDARY SOCIETY Birmingham, Alabama



The *Alabama Mineral & Lapidary Society* is a non-profit organization for people interested in geology, mineralogy, paleontology, and the lapidary arts. Membership is open to all people interested in the objectives of the society. Dues for the calendar year 2015 are \$20.00 family, \$15.00 single, and Juniors / Students \$10.00. Checks should be made payable to the **Alabama Mineral & Lapidary Society** and given to the treasurer. The society holds regular meetings on the second Friday of the month at 6:30 pm (**except the month of June because of the Tannehill Show**). Meetings are currently held at the **Emmet O'Neal Library in Mt. Brook, AL.** and usually last an hour and a half. There is a half hour of snacks and fellowship preceding the meeting.

The society is affiliated with the *American Federation of Mineralogical Societies*, the *Southeast Federation of Mineralogical Societies*, and the *Eastern Federation of Mineralogical Societies*. Reprint rights are granted for any information in the bulletin except minutes and copy right articles with permission to print one time only in ROCKHOUND ROUNDUP, provided credit is given to the author and the original publication as well as the bulletin. Exchange bulletins should be addressed to the editor.

THE SOUTHEAST FEDERATION OF MINERALOGICAL SOCIETIES, INC.

**A NON-PROFIT, NON-COMMERCIAL, NON POLITICAL ORGANIZATION AND
 REGIONAL FEDERATION OF THE AMERICAN FEDERATION OF
 MINERALOGICAL SOCIETIES**



PURPOSE:

To bring about a closer association of clubs and societies devoted to the study of the Earth Sciences and the practice of the lapidary arts and crafts in the southeastern part of the United States.

OBJECTIVE:

To cooperate with similar Federations to promote public interest in the Earth Sciences and the conservation of natural resources.

