

**Official Monthly Publication of the
Alabama Mineral & Lapidary Society
Birmingham, Alabama**

Website: <http://www.alabama.lapidary.club.com>

President’s Message

As 2017 comes to a close, we can look back at a successful year for the AMLS. At the top of the list was an outstanding Tannehill show. We were blessed with good weather, wonderful vendors and most importantly, the AMLS members that stepped up and gave their time and efforts to support the club. Cathy Kellogg deserves a big THANK YOU for her unending efforts to bring the show together. With the enthusiasm and leadership of Bud and Lou Ann Newell, we enjoyed several fun and successful field trips throughout the year. Also, I want to thank Don and Jill Hill for keeping our club equipment and hosting the cabbing parties. Most of us don’t understand the behind the scenes work that is done to maintain and clean our club equipment. And the same thing should be said for Sandra Sullivan, whose tireless work keeps this club functioning at a high level. There are many more people that should be recognized for their work on things we too often take for granted – hospitality for the monthly meetings, keeping track of membership, paying bills, keeping the minutes and many more.

In the past year, we were entertained by a number of generous and talented speakers and learned a great deal from many interesting programs. And finally, a special thanks to Tom Talty for his wit and creativity!

None of these things could have been accomplished without the leadership of Larry Hensley. Over the last 2 years, our club has grown significantly in membership and diversity of talents. Thank you, Larry, for a job well done.

The new year will bring many changes and opportunities. The biggest change will be moving our meeting location to the Cahaba Heights Methodist Church. We decided to make this move due to the many scheduling issues we have had this past year. The church is welcoming our move, and we are excited about the possibilities this new location will provide.

The New Year will bring many challenges, but I am confident our club is determined to build on our accomplishments, set new goals and continue to make AMLS successful in all we do.

Merry Christmas! Happy Holidays! And a very Happy New Year!

Respectfully, John Wild, A.M.L.S. President



JOHN WILD
President A.M.L.S.

Dec. 8 - Scholarship Awards, Christmas Exchange
A lot fun stuff and holiday meal.
*** Dues are due by this meeting if you wish to receive the \$5. discount.
Dec. 16 - Hoover Library Class with Cindy H. and Yvonne F. - finishing projects and getting some Christmas items ready.
Dec. Board Meeting Date To Be Decided and NO cabbing party scheduled at this time.

Looking ahead ~ Jan. 12, 2018 - New Meeting Place : **Cahaba Heights United Methodist Church**
3139 Cahaba Heights Rd.
Cahaba Heights, AL. 35243
Possible Cabbing Party with Don and Jill Hill

Inside ~

| | |
|--|---------|
| President’s Message, Calendar, Important Info | Page 1 |
| Slate of Officers, Board Members, New Members | Page 2 |
| Meeting Minutes 11/3/17, Board Meeting Minutes 11/27/17 | Page 3 |
| Shows & Rock Swaps, Board Meeting Minutes 11/27/17 Con’d., SFMS Officers | Page 4 |
| DMC - Fieldtrip 12/9/ 17 | Page 5 |
| Brad Smith Bench Tips, Classified Ads, Dues are dues | Page 6 |
| Hoover Library Class Info for 12/16/17, AMLS Officer Line Up, SFMS Scholarship | Page 7 |
| T-shirts, A.M.L.S. Gift Exchange, Rockhounds Jingle Bells, Crazy Shopping Trip | Page 8 |
| New Meeting Place for 1/12/18 | Page 9 |
| Lapidary Whisperer | Page 10 |
| Last page funnies, Club application | Page 11 |
| Club Information and Mailing wrapper | Page 12 |

| OFFICERS | |
|------------------------------------|--|
| President | John Wild 205-981-6609 john@milcomtextiles.com |
| Vice President | Levan Foster 205-276-8786 levanfoster@gmail.com |
| Treasurer | Reggie Bolton 205-678-8772 reggie@newenvirons.net |
| Recording Secretary | Bunny Bolton 205-678-8772 bunny@newenvirons.net |
| Corresponding Secretary | Sandra Sullivan 205-903-7062 doodle35146ss@yahoo.com |
| Historian | <i>Sandra's doing it</i> |
| COMMITTEE CHAIRS | |
| Editor / Publications | Sandra Sullivan doodle35146ss@yahoo.com |
| Education Chair | Cindy Hensley hensley.larry@gmail.com |
| Fieldtrip Chair | Bud and Lou Ann Newell newell.louann@gmail.com |
| Hospitality Chair | Rhea Proffitt kokomo0114@yahoo.com |
| Membership Chair | Judith Johnson judelinej@gmail.com |
| Program Chair | Levan Foster levanfoster@gmail.com |
| Property or Equipment Chair | Don Hill donahill@comcast.net |
| Publicity Chair | Tom Talty taltylaw@bellsouth.net |
| Show Chair | Cathy Kellogg tannehillgemshow@gmail.com |
| Webmaster | Reagin Farley regain@gmail.com |

**For more information:
AFMS and SFMS Websites**
The SFMS Newsletter, *the Lodestar*, and the AFMS Newsletter are now available for all members to read on line at <http://www.amfed.org/sfms>. And www.amfed.org Email: sfms@amfed.org



Welcome these new members to A.M.L.S.

We have these new members who need to learn about our rock club and the people in it. Please give them our warmest welcome and extend you hand to introduce yourself and put them at ease.

Kathleen and Chad Sentell of Hoover, AL
Timothy Fram and Michelle Curtis of Birmingham, AL.

Members Serving on the Board of Directors :

| | |
|-----------------------|--|
| Savvy Mc Cravy | 205-305-5396 business_mode_savvy@yahoo.com |
| Don Rosenstiel | 205-822-1513 don77rose@gmail.com |

Eastern Federation of Mineralogical & Lapidary

| | |
|--|--|
| President of EFMLS | Barbara Ringhiser bar5678@aol.com |
| Alabama State Representative to EFMLS | |

Southeast Federation of Mineralogical Societies

| | |
|---|---|
| President of SFMS | Greg Hamilton |
| Alabama State Representative to SFMS | Phillip Kaiser kaiserpw@att.net |

Meeting Minutes from November 3, 2017

Levan Foster blessed our meal and we enjoyed a Thanksgiving feast. Afterwards the AMLS players presented a silly play about a serious subject -the importance of staying hydrated in the field. A sing along kept everyone involved (or awake).

Larry thanked all who had brought food and door prizes. A motion was made to accept the October minutes as written in the newsletter and we voted to do so. It was announced that tomorrow's class will be on preparing holiday items such as earrings and pendants with wire, beads and whatever you like. Bring pliers and other tools you may have, a light and magnifiers if you need them. The class is 10:30 to 5:30 at the Hoover Library, downstairs.

Larry reminded us that beginning in January we will be meeting at the Cahaba Heights United Methodist Church. Bud Newell brought rocks from the Dixie Mineral Council field trip to Rockmart, GA. He reminded us that these field trips, held almost every month, are available to our members and we should be going. John Gaston told us he is having a rock sale at his house this weekend.

The club has received thank-you cards from Nan Smith Butler for the flowers at Bob Smith's funeral and Carolyn Neyman for the donation to Birmingham First Nazarene in memory of Kenneth Kornegay.

Lou Ann Newell, last year's winner of the Kontzen Scholarship, spoke about her trip to William Holland. She took Wire Wrap 1 and Bud accompanied her and he took Silver 1. They encouraged everyone to go and experience the fun, friendship, learning and inspiration. Reggie Bolton, winner of the Education Scholarship, spoke about his experience soldering in his Silver 1 class there.

AMLS officers for 2018 were sworn in and the gavel passed to John Wild.

Door prizes were awarded and the meeting adjourned.

Respectfully submitted,

Bunny Bolton, Recording Secretary



Front Row - Left to Right. Cathy Kellogg, Cindy Hensley, Sandra Sullivan, Bunny Bolton, Lou Ann Newell. Back Row - Left to Right. Tom Talty, Levan Foster, Reggie Bolton, John Wild. Standing to the right handling the Swearing - In Mike Sullivan and out going President Larry Hensley

AMLS Board Meeting November 27, 2017 ~

In attendance : Bud and Lou Ann Newell, Larry and Cindy Hensley, John Wild, Judith Johnson, Don Rosensteil, Reggie and Bunny Bolton, and Sandra Sullivan.

Because of a rise in costs, security, Jefferson County show license, and advertising, Reggie moved that we increase prices for Tannehill spaces to \$100, \$125 and \$165. This is approximately a 10% increase. Cindy seconded and the motion passed. The show really needs a geode cracker. We can contact some potential vendors who do this or the club could purchase a cracker (actually a pipe cutter) and buy a variety of geodes, possibly from El Paso Rocks, and sell them as a fund raiser. Safety concerns were discussed and it was agreed we should buy Band-aids. Sandra showed us some dinosaur paraphernalia we could purchase to give out to kids. We also talked about getting local paleontology clubs involved by offering them space for information tables. A committee was formed to work on games for kids. John, Lou Ann & Bud and Cindy will head it up with hopes of adding more members. John mentioned the game we saw at the Zoo throwing a beach ball with numbers on it to a kid and the numbers under their hands will dictate a question asked about rocks or dinosaurs. Simple equipment with little storage necessary makes this appealing and education is an important part of what we should be doing.

In regard to the new meeting place, we are paid through the July meeting, Sandra will print maps to pass out at the December meeting. We need to be clear on our responsibilities for clean-up, lights, etc. and getting a key or arranging a church member to let us in. Cindy will take care of this. *Continued on page 4.*

Clubs and Societies Shows and Rock Swaps via RockNGem shows, SFMS website, and other sources

Dec 1 - 3 - Withlacoochee Rockhounds of Herando County Veterans Memorial Park, Hudson, FL www.withlacoocheerockhounds.com/

Dec. 1 – 3 Montgomery, AL Montgomery Gem & Mineral Society, Garret Coliseum; 1555 Federal Drive; Fri. 9-6, Sat. 10-6, Sun. 11-5; Contact: Terry Fetzer
gemshow@MontgomeryGemAndMineralSociety.com; www.montgomerygemandmineralsociety.com/#!annual-gem-show

Dec. 2-3 Pinecrest, FL Miami Mineralogical and Lapidary Guild, Evelyn Greer Park; 8200 SW 124 Street; Sat. 10-5, Sun. 10-5 Contact Sandy Mielke, Miami, FL 33133, (305)-858-6967; e-mail: webguy@mmlg-inc.org; Web site: www.miamigemandmineral.com

Dec. 9 & 10 - Franklin, TN. Earth Treasures Show Mid-Tennessee Gem & Mineral Society. Sat. 9- 6, Sun. 10 -5. Williamson County Ag Expo Park 4215 Long Lane Franklin, TN., 37064.
www.MTGMS.org/show.htm Show contacts: Mardy Smith, Show Chair (show@MTGMS.org) or Steve Henegar, Dealer Chair (show@MTGMS.org) Email: show@MTGMS.org

Dec. 9-10 Leesville, LA: DeRidder Gem and Mineral Society, West LA. Forestry Assoc. Bldg.; 276 H. M. Stevens Blvd.; Sat. 9-5, Sun. 10-4; Contact Adam Valin, (337)-585-3693; e-mail: deridder.rockngem@gmail.com; Web site: rockngems-wla.com

Jan.12 -14, 2018 Pinellas Geological Society, Inc. Largo Cultural Center, Largo, FL www.PGS.Rocks

Jan. 20-21 Panama City, FL Panama City Gem and Mineral Society, Central Panhandle Fairgrounds; 2230 E. 15th Street; Sat. 9-5, Sun. 9-4; Contact Steve Shipton, 5113 e. 13th Court, Panama City, FL 32404, 850-867-0586; e-mail: ship-ton3@comcast.net; Web site: pegmsociety.com

Jan. 20-21 Deland, FL Tokoka Gem and Mineral Society, Volusia County Fairgrounds; 3150 New York Ave; Sat. 10-6, Sun. 10-5. Contact Mary Dejan, (386)-871-6221.

Board Meeting Minutes Continued ... The scholarship committee has chosen the Kontzen and education scholarship recipient to be awarded at the December meeting. For 2018 the education scholarship will be revamped.

The club website has some problems which need to be addressed. We spoke to Reagin Farley, our Webmaster, on the phone about the most pressing problems and will discuss it further at the December meeting. Sandra will send her the information she needs.

Dates have been reserved at the Hoover Library for classes but the number of classes may be scaled back. Dates are Dec. 16, Jan. 20, Feb. 17, Mar. 17, and Apr. 21. We need more members to volunteer to teach.

The silent auction held at the October meeting was a success and we agreed we need to do more. Club member badges need to be done too. Judith will get a list of members who have paid their 2018 dues to Sandra who will send it along to Jackie Seale to make them up.

Steve Adams has donated equipment to the club. A decision needs to be made on the best use of it but we need to give it more thought and will talk about it later.

Respectfully submitted,
Bunny Bolton, Recording Secretary

FMS officers for 2018

President: Craig Hamilton
1st Vice President: Reggie Bolton
2nd Vice President: No nomination
Treasurer: Mari Webb
Secretary: Jerri Heer
Assistant Treasurer: Barbi Beatty
Membership: Jason Hamilton
AFMS President Elect for 2019: David Wayment

The SFMS Newsletter, the Lodestar, and the AFMS Newsletter are available for all members to read on line. For Federation news, please check out these websites:

<http://www.amfed.org/> <http://www.amfed.org/sfms/>

If you know of anyone who would like to receive the Lodestar, please have them send an email to sfms.lodestar@gmail.com to request being added to the subscribers list. SFMS Lodestar
John Rasmussen, Editor



An Official Field Trip of the Emerald City Rock and Gem Club
(Greenwood, SC) (HOST)

Saturday, December 9, 2017
9:00 am to 2:00 pm EST
Diamond Hill Mine
Antreville, Abbeville County, SC
Fee (See Below)

TRIP: This is a very popular site that has had the spoil heaps turned over regularly this fall. In our travels around the country we've run into people from all over who love coming here. Recently people have been finding aquamarine in smoky quartz matrix. We often don't know what we've found until we get it home and clean it up!

COLLECTING: Quartz crystals (milky, skeletal, smoky, and some amethyst - rare), Beryl/Aquamarine - rare. Garnet and epidote finds have also been reported.

BRING: This is surface hunting, so digging tools are not necessary, other than a screw driver or butter knife to pry fossils from dirt. A rock hammer is helpful at times if you want a piece of chert. We park at the hunting site, so you can leave your lunch, drinks and cooler in the car. Sun screen might be handy. Bring drinks and snacks as we stay until 12:00 noon and/or 2:00 PM.

REQUIREMENTS: Sturdy closed shoes or sneakers, no sandals or open toed shoes. Jeans or long pants are preferred to protect your knees and long sleeve shirt or sun screen. If it is a bright day, a hat or ball cap would be useful.

CHILDREN: Yes. **PETS:** No.

FACILITIES: The one thing they do not have is a restroom, stop at the gas station in Brooksville before you arrive.

DIRECTIONS AND WHERE TO MEET: The meeting time will be 8:45 AM as we go into the mine in convoy at 9:00 AM. The gates are locked behind us so don't be late. If you are unavoidably detained, call Fred Hendershot (813-892-5864). **Take I-75 to exit #301, Brooksville, Florida.** Go ten miles into Brooksville and follow Rt. 98. It will turn north in town and go another ten miles north. The Vulcan/Cemex signs are on the left (the Cemex sign is larger and easy to spot). Park in the large field and sign the Vulcan liability waiver. For Google Maps and GPS units, the address is 16313 Ponce De Leon Blvd., Brooksville, FL 34613.

CONTACT: Fred Hendershot (813-892-5864).



Aquamarine in smoky quartz matrix, found July 2017.



Quartz cluster with iron stain.



Quartz cluster, approx. 8" across, found in Sept. 2017.

DMC Coordinator email: sfms-dmc@amfed.org

World Wide Web site for the DMC is: <http://www.amfed.org/sfms/dmc/dmc.htm>

DMC is a program of the Field Trip Committee of the Southeast Federation of Mineralogical Societies, Inc.

Copyright © All rights reserved. "Earth first...we'll collect on the other planets later."

Brad Smith Bench Tips ~

MARKING YOUR TOOLS

It makes sense to mark your tools if you ever lend them to friends or take them out to classes or workshops. Question is how to mark them permanently. For metal tools, I use a very small ball bur running fast in the Dremel or Foredom to "engrave" my initials. Other times I'll form the initials with a number of hits with a center punch.

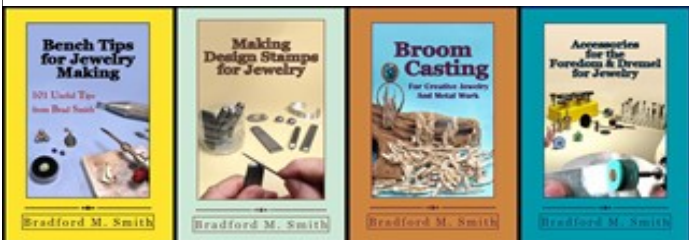
But for hammer handles and other wooden tools, the country boy in me came back and thought "Why not make a branding iron?" If you'd like to try one, all you need is a little scrap copper or nickel about 22-24 gauge, a piece of heavy brass or copper for a base, about 6 inches of metal rod and a piece of wood for the handle.



I formed my initials from a couple 4mm wide strips of sheet nickel. The "S" was one piece, but the "B" was three pieces soldered together with hard. (Remember to form the letters backwards). I then soldered the letters with medium onto a piece of 1/8 inch thick brass bar to act as a heat sink. Finally, I soldered a piece of 1/8 round rod on the back of the brass bar as a shaft to join to a wooden handle.



With the holidays upon us soon, we're all making our lists. If you need a present for someone who does jewelry, consider a book that teaches new skills. See a selection at Amazon.com/author/bradfordsmith. www.BradSmithJewelry.com



Classified Ads and Rockswap Items ~

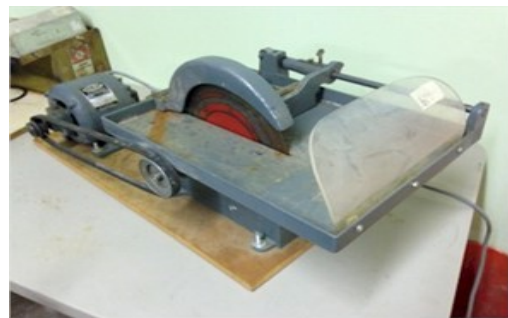
Beginning Cabochons Lessons

One-on-one beginner's cabochons lessons taught in my home. Ten-hour course (two work days) will teach you the basics of cab cutting using the same curriculum of my week-long class taught at William Holland. You will be the only student in the class and will have exclusive use of a DP Genie during the class. Contact me at steve@bitterbrook.com or call me at 467-7881 to schedule your February lesson. \$100 includes starter kit and printed material as well.



Equipment for Sale

I have a trim saw, Bull Wheel, Ray-Tilt 6-inch lap, flexshaft tool, and a small kiln for sale. See them all at <http://bitterbrookcabochons.com/for-sale.htm>



What would you like to list? If this concept is to work, I need some help out there folks. Send me your info, please! doodle35146ss@yahoo.com

FOLKS, DUES ARE DUE



It's that time of year again folks. Our yearly dues are due in November per Article III of the by-laws. They are annual dues that run from January 1 thru December 31 and are payable at the annual meeting.

Please see our treasurer at the meeting in order to remain in good standings. If you pay by the December meeting you get a \$5.00 discount. We have to send in to the SFSM and the EFMLS our club dues and insurance. Please help Reggie out. S.S.



**SFMS Workshop Scholarship Committee
Report for 2017
David Wayment, Chairman**

We will start collecting prizes for the 2018 drawing soon. Club Treasurers may use any tickets that were not used this year, as they are not dated. Of the 72 member clubs in the SFMS, only 18 chose to participate this year. We had 49 drawing prizes and a total of 2824 tickets sold. The member clubs earned from 1 to 22 chances in the drawing for the scholarships. Some clubs sold more than 1 ticket per club member as well as sending in prizes. Some clubs only sent in prizes. While this is fantastic, it is the money collected from selling the tickets that provides the scholarships. Hopefully, we will do even better in 2018.

The winning clubs are:

- North Mississippi Gem and Mineral Society
- Canaveral Mineral & Gem Society
- Knoxville Gem & Mineral Society
- Columbia Gem & Mineral Society
- Georgia Mineral Society
- Columbia Gem & Mineral Society
- Knoxville Gem & Mineral Society
- North Mississippi Gem and Mineral Society

We will start collecting prizes for the 2018 drawing soon. Club Treasurers may use any tickets that were not used this year, as they are not dated. Of the 72 member clubs in the SFMS, only 18 chose to participate this year. We had 49 drawing prizes and a total of 2824 tickets sold. The member clubs earned from 1 to 22 chances in the drawing for the scholarships. Some clubs sold more than 1 ticket per club

2018 Officers and Chairmen

- President - John Wild
- Vice President - Levan Foster
- Second Vice President (Fieldtrip Chairman) - Bud and Lou Ann Newell
- Treasurer - Reggie Bolton
- Corresponding Secretary - Sandra Sullivan
- Historian & Editor - Sandra Sullivan
- Recording Secretary - Bunny Bolton
- Publicity Chairman - Tom Talty
- Membership Chairman - Judith Johnson
- Education Chairman - Cindy Hensley
- Club Show Chairman - Cathy Kellogg

Please come show these folks your support by working with them as they take on the role of leadership in these offices. *Thank you, S.S.*

SFMS Continued ... member as well as sending in prizes. Some clubs only sent in prizes. While this is fantastic, it is the money collected from selling the tickets that provides the scholarships. Hopefully, we will do even better in 2018.

SFMS Workshop Scholarship Committee Report for 2017 David Wayment, Chairman

***** SPECIAL NOTICE ***** To see the listing of the recipients of the prizes, please go to the SFMS website to read the Special Edition of the Lode star 12/3/17 sfms.lodestar@gmail.com and get on the mailout list too. *S.S.*

~ December 16th Hoover Library Class ~

Cindy Hensley says ... the subject for the class will be the completion of ongoing projections and creating new holiday items. If you have a project you would like to see done in a class setting, **please let them know**. The regular scheduled classes would run 10:30 am to 5:30 pm. If you have an ideas about a class that you would like have offered, please contact : Cindy Hensley 205-910-2293 or Yvonne Foster 205-602-8280 for more info. *S.S.*



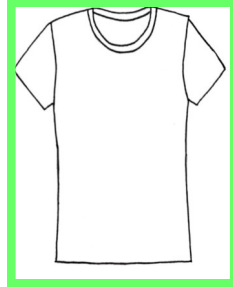
Cindy Hensley Yvonne Foster

A.M.L.S. T – Shirts ~

We have T-shirts available....

Please call, email or text Lou Ann Newel 205-482-3234. She can bring you a T-shirt to the next meeting on Friday Oct.6th.

newell.louann@gmail.com

**A.M.L.S Gift Exchange explanation ~**

You do not have to participate if you don't wish to. It goes like this. We set the gift cost of about \$10.00 in value that is rockhound related. If you are a man, then you would bring a gift for a man and marked on the tag "MAN". If you are a woman, you would bring a gift marked "WOMAN". If you are a child, you would bring a gift marked "CHILD". This way, everyone gets a gift that participates that is just for them. We have a category we call "ANYONE". This is a type of gift that anyone who is a rockhound would be delighted to receive. If you choose this category, please label it "ANYONE".

We do not have doorprizes at this meeting but we use the sign-in book to call out the names for the selection of your gift. Everyone always have a great time and especially the children. If you personally wish to gift to the children, please bring enough for all so as none will feel left out.

**CRAZY SHOOPING TRIP**

... On a whim, Mike and I went into an antique store in downtown B'ham. Guess what bargains I found !!! On the \$5.00 sale table was a necklace made of amethyst, rose quartz, and nice beads and a wonderful pin for my collection. I got out of one of the big cases a bracelet hand made of silver a big natural stones, only \$36.00. It just goes to say you may never know what you'll find in a thrift store or antique mall or even at the Tannehill Trade Days. I have found good stuff at the new HOME store in Hoover. S.S.

Hammers Clink (To the tune of Jingle Bells)

Down the road we go, to a quarry far away.
It's to the rocks we go, sleeping all the way.
We got there by six, but did not leave till eight
I hope we get the boulder out before they lock the gate, oh!

CHORUS

Hammers clink, chisels chink, the rock bits fly away.
Oh what fun it is to be on a field trip today-ay!
Hammers clink, chisels chink, the rock bits fly away.
The weather must be wonderful 'cause Bud says it's okay.

We were driving fast, because it's getting light.

Its okay to pass, but never on the right.

The coffee cups are full, with rest stops gleaming bright.

I knew we should have packed ahead and left on Friday night, Oh!

CHORUS

I finally found a vug, I thought was cobaltite,
but it was just a bug, that scuttled out of sight.

I sat down in despair but much to my delight,

I found a slab of quartz and things that Bud said was all right,

(I GUESS, ...YOU COULD ALWAYS GIVE IT TO THE KIDS TABLE, OH)

CHORUS

We sat down for lunch, to take a little break
dry sandwiches and punch is all I thought to make

We packed our car so full the bumpers touch the ground

I hope that we get out of here and into the next town.
Oh!

CHORUS

Our banquet'slots of fun we sit and talk and eat

I just hope I've won another centerpiece

The help is very good they quickly clear our plates

I guess we like the chicken 'cause we never have Swiss steak, oh!

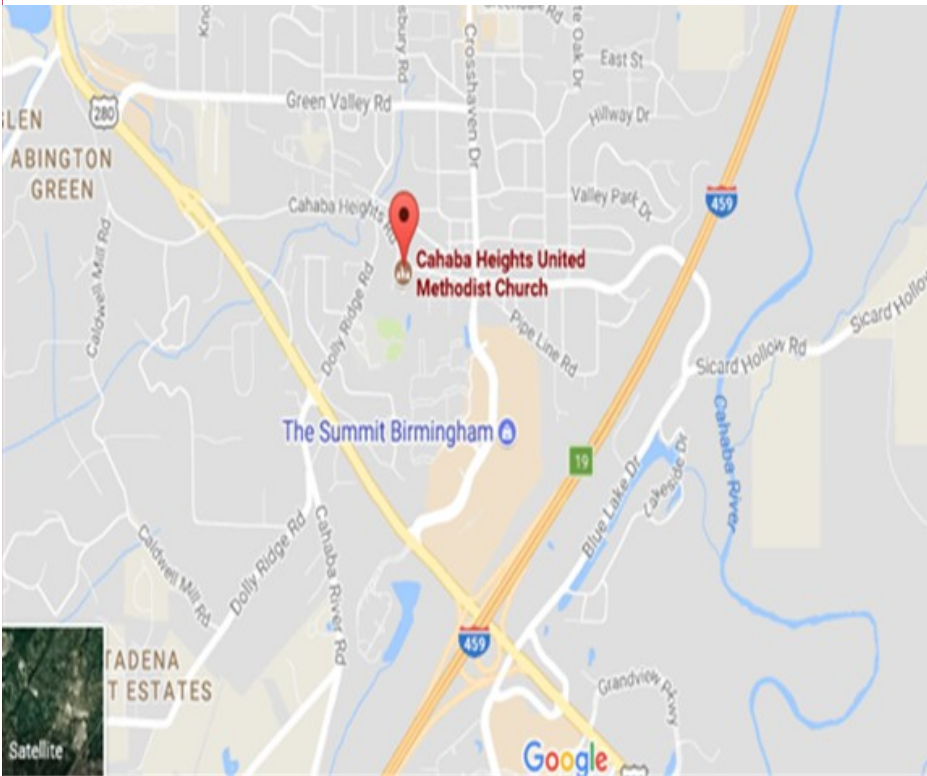
* Special Note: the editor did her job and edited some areas to suit her needs and she has no clue where this song/poem came from. She just found it in some of her old computer files. *Merry Christmas SS*

New location for the Alabama Mineral & Lapidary Society Meetings Beginning with the **JANUARY Meeting**

The Search Committee has gone through all the steps necessary to find another location for the rock club to meet on a regular basis. The second Friday of the month is needed so as we can comply with what the guidelines state for operating our type of organization. The Search Committee consist of Don Rosenstiel, Bunny Bolton, and John Wild.

The results are as follows: The **Cahaba Heights United Methodist Church** was found to meet our needs and the church was receptive to our group meeting there. The church has been toured by several members who say the group should have no problem with meeting there.

Below please check over how you will travel to and from the meeting place using the map Mr. Larry Hensley so graciously provided. **Address: 3139 Cahaba Heights Rd. Across the street from the Dairy Queen, up the hill about 150 ft.**

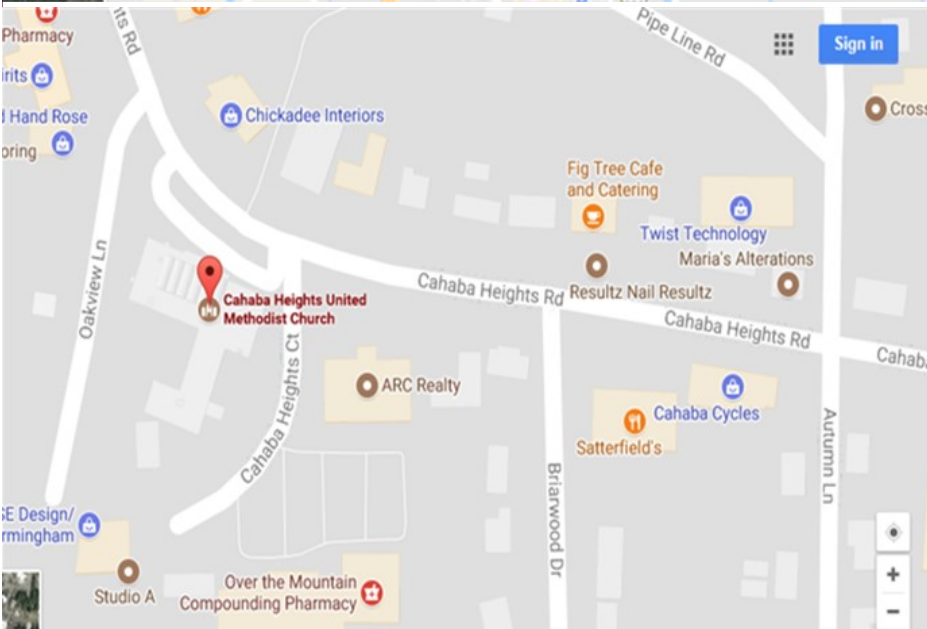


DIRECTIONS –

From the North – Take I-20/59 to the Red Mt. Expressway South or Hwy. 280 South to the Summit shopping center. Take a **LEFT** onto Summit Blvd, **TURN LEFT** when you reach Cahaba Heights Rd. The church should be on your **LEFT** with a DQ across the street.

From the West or East – Take I-459 to the Hwy. 280 Exit. Get off heading North. Go to the Summit Blvd. traffic light and turn **RIGHT**. Stay on Summit Blvd, until you reach Cahaba Heights Rd. **TURN LEFT** onto Cahaba Heights Rd. and the church will be on your **LEFT** and a DQ will be across the street.

From the South – Get onto Hwy 280 N. and stay on it until you reach the Summit shopping center. **TURN RIGHT** onto Summit Blvd. Travel on past the shopping center until you reach Cahaba Heights Rd. **TURN LEFT** on Cahaba Heights Rd. and the church will be on your **LEFT** with a DQ across the street.



Lapidary Whisperer Thanksgiving with Dendrites

I've always loved dendrites in my rocks. Dendrites are markings in stones that look like ferns or trees or other plants -- if you catch them along their long direction. However, when you cross-cut them, you get a bunch of dots like the two different angles of the same piece of dendritic opal below.

DENDRITE OR PLUME?

In today's blog, I'm taking a strict interpretation of dendrites. Some people like to include plume agates with dendritic agates, but aside from the fact that they look very different to me, Roger Pabian, co-author of "Agates: Treasures of the Earth" has clarified the difference in that he states that Dendrites form inside existing agates and Plumes form first and then are surrounded by agate.



In this picture, the oval on the left is dendritic opal, the oval on the right is plume agate. Notice how the plumes look a bit fluffy? It is further complicated by the fact that not all rocks with dendrites are agates. However, they usually are made of chalcedony, a term used to describe a group of microcrystalline silica-based minerals that include quartz, jasper, and onyx. They are great for lapidary work all coming in at 6.5 to 7 on the Mohs scale of hardness. Another mineral known for dramatic dendrites is

Rhyolite which is also a silica-based mineral. It's not a chalcedony because Rhyolite crystals are much larger than the microscopic ones that define chalcedony. Some of my favorite dendritic rhyolite is found in the Sonora area of Mexico (and rock shows!) And then there's dendritic sandstone. Sandstone doesn't have a place on the Mohs scale because it can be so soft you can rub it off with your finger up to something very hard that can be used in construction.

THE INSIDE STORY

From a mineral standpoint, dendrites consist of iron or manganese from nearby rocks that seep into cracks in the chalcedony and crystallize as they harden, creating the fern or tree patterns that make them so popular. In my readings about them, I was disappointed to see that they were nearly always described as black or brown in color, especially since I have two onyx rocks on my desk right now; one has dark blue dendrites and the other has dendrites the color of burgundy wine. It turns out that manganese oxide comes in a rainbow of colors including pink, violet, green and others.



NOT EXACTLY ONE OF THE ABOVE



Whenever people try to place walls around the natural processes, there are usually exceptions. This is a picture of a moss agate. Like other dendrites, it forms in the cracks of established chalcedony rocks. The difference is the mineral inclusion is green hornblende. It's as delightful to work as any of the others, and the startling green color is always an eye-catcher! For all my readers in the USA, have a happy and blessed Thanksgiving. As others begin to prepare for seasonal holidays, I wish you all the best.

Right now, I'm working on a blog post about how minerals get inside geodes -- or when you see a channel between the interior of the geode and it's outside is the material expanding and flowing out, or is it the minerals lining the geode flowing in?

Your Lapidary Whisperer,
Donna Albrecht

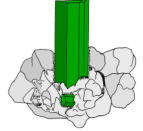
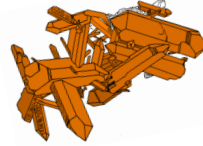
<http://www.lapidarywhisperer.com/>

Last page funnies ...

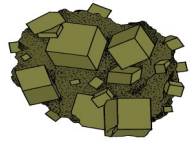
A GEMSTONE CHRISTMAS



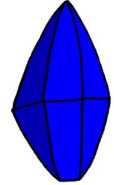
M is for malachite, green and bright.
E is for emerald, its beauty we herald.
R is for ruby, red as can be.
R is for rhodochrosite, the pink is just right.
Y is for yag, hope Santa has one in his bag.



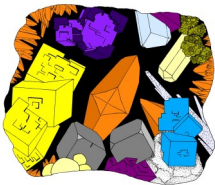
C is for citrine, rare, but our hearts it will win.
H is for hauynite, the colour is blue and white and golden flecks of pyrite.
R is for rhodonite, its black lacy dendrite are a pretty sight.



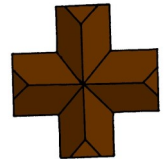
I is for imperial jade, a reputation it has made.
S is for sapphire, the cornflower blue we desire.



T is for tourmaline, its varied colours are the richest
M is for moonstone, if polished right its cats-eye will be shown.



A is for agate, no two are alike; do not look for a mate.
S is for shalerite, like the Star of Bethlehem, it's yellow and bright.



Original Author Unknown
Rockbound News 12/87 - SMS Matrix 12/88 MMS Tumbler 12/89

A.M.L.S. Application for Membership _____ New _____ Renewal

NAME (S) _____

CHILDREN Age group (0 to 4) _____ (5 to 10) _____ (11 to 15) _____ (16 -18) _____

ADDRESS _____

CITY _____ STATE _____ ZIP _____

HOME PHONE _____ WORK/CELL PHONE _____

E-MAIL ADDRESS(S) _____

Family \$25. _____ Single \$20. _____ Junior / Student \$15. _____

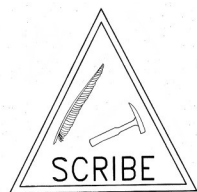
After June 1, the cost of the membership dues are one-half price for new members only for the remainder of that year. **Dues for regular members are to be renewed at the November meeting and / or before January 1st of the new year. A \$5.00 discount if paid by the December meeting.**

Please make checks payable to the ALABAMA MINERAL & LAPIDARY SOCIETY and mail to P.O. BOX 1067 SPRINGVILLE, AL. 35146 **OR** bring to a meeting.

Info: Usual Date Second Friday of each month except for the month of June. The Tannehill Show takes the place of the June meeting. **Meeting place is** Emmet O'Neal Library 50 Oak St. Mountain Brook, AL. 35213 PH. (205) 897-0459 Website: info@eolib.org **Meeting time:** 6:30 p.m.

Visitors Welcomed !

Date Received _____



SANDRA SULLIVAN, EDITOR
 P.O. BOX 1067
 SPRINGVILLE, AL. 35146

If undeliverable, please return to the address above.

Website: <http://www.alabama.lapidaryclub.com>

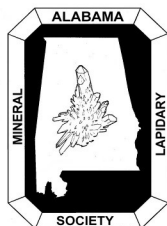


STAMP

Meeting: DECEMBER 8, 2017 Friday
Place: EMMET O'NEAL LIBRARY
50 Oak St. Mt. Brook, AL. 35213
205-897-0459 info@eolib.org
Time: 6:30 pm gathering and fellowship
And food. 7 pm Program

MAILING LABEL

ALABAMA MINERAL & LAPIDARY SOCIETY Birmingham, Alabama



The *Alabama Mineral & Lapidary Society* is a non-profit organization for people interested in geology, mineralogy, paleontology, and the lapidary arts. Membership is open to all people interested in the objectives of the society. Dues for the calendar year 2017 are \$25.00 family, \$20.00 single, and Juniors / Students \$15.00. If you pay by the December meeting there will be a \$5.00 discount. Checks should be made payable to the **Alabama Mineral & Lapidary Society** and given to the treasurer. The society holds regular meetings on the second Friday of the month at 6:30 pm (**except the month of June because of the Tannehill Show**). Meetings are currently held at the **Emmet O'Neal Library in Mt. Brook, AL.** and usually last an hour and a half. There is a half hour of snacks and fellowship preceding the meeting.

The society is affiliated with the *American Federation of Mineralogical Societies*, the *Southeast Federation of Mineralogical Societies*, and the *Eastern Federation of Mineralogical Societies*. Reprint rights are granted for any information in the bulletin except minutes and copy right articles with permission to print one time only in ROCKHOUND ROUNDUP, provided credit is given to the author and the original publication as well as the bulletin. Exchange bulletins should be addressed to the editor.

THE SOUTHEAST FEDERATION OF MINERALOGICAL SOCIETIES, INC.

A NON-PROFIT, NON-COMMERCIAL, NON POLITICAL ORGANIZATION AND REGIONAL FEDERATION OF THE AMERICAN FEDERATION OF MINERALOGICAL SOCIETIES



PURPOSE:

To bring about a closer association of clubs and societies devoted to the study of the Earth Sciences and the practice of the lapidary arts and crafts in the southeastern part of the United States.

OBJECTIVE:

To cooperate with similar Federations to promote public interest in the Earth Sciences and the conservation of natural resources.

