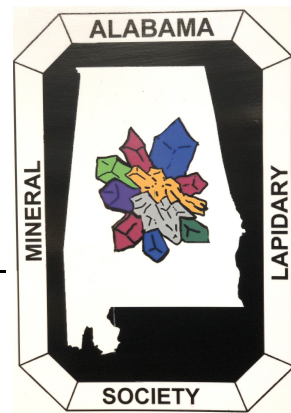


# Rockhound Roundup

OFFICIAL MONTHLY PUBLICATION OF THE ALABAMA MINERAL & LAPIDARY SOCIETY



**January Meeting:**  
**Friday, January 12,**  
**6:30 pm**  
**Cahaba Heights Methodist Church**

## President's Message for 2024

Happy New Year everyone. I hope you have been enjoying the winter holidays. Now we begin a new cycle and it looks like it's going to be interesting.

When I volunteered to assume the office of club president while still holding the treasurer's office I committed to six months' service. My plan was to find people to fill both offices who could lead us through a transition to a new generation of management. But I have to say that hasn't gone as I hoped. We were able to fill some unexpected vacancies but our four highest offices (president, 1st VP, 2ndVP, and treasurer) are still under the management of caretakers. Perhaps you may be thinking "Well, Reggie is a nice guy. Surely if no one else comes forward he will reconsider and stay in office.". I'm afraid that is not going to happen. There are a number of reasons for this that I won't go into here. Several of them are beyond my control. And some are my responsibility to control. Be prepared for me to step out of the picture by the end of March. I will continue to do my best to help the club by serving on the board if you want me to and to offer advice if requested but I will no longer

### Inside this issue:

President's Message	1
President's message, cont., December minutes	2
Workshop News	3
Upcoming Shows, Birthstones	4
William Holland information, awards	5
Field Trip information	6
Bench Tips	7
Calendar	8

**Welcome new members Wesley and Dana Fox**

### Did you know?

In order to attend SFMS or Dixie Mineral Council events, like classes and field trips, you must be an active, dues-paying member of a club, and have an active membership card? It's an insurance thing.

# Rockhound Roundup

## President's Message, continued

be responsible for holding an office. I have tried to establish communication that would address this issue but that hasn't developed as it needs to. I appreciate the efforts of those who are trying to help but we have got step up our game. Some one should already have been working to learn the treasurer job but the only one that has tried has been waylaid by potentially very serious health issues. (Thank you Levan) There is much work needed to update and improve our club. But right now we are struggling just to keep basic operations going. We need people to step up to the challenge. If that doesn't happen then the first line of defense will be to scale back our operation. And if that can't be resolved, well, there are provisions in the bylaws for dissolving the club. I would consider that a disaster but I can't prevent it on my own. I don't like to start the year off on a bad note but I feel a need to be honest and clear about the situation. I have enjoyed my time and even my work with the club and I would love to see it keep going. But we need everyone's help to make that happen. Please get involved.

Reggie Bolton, AMLS acting president, acting treasurer, etc

## Minutes from December Meeting

AMLS December meeting and Christmas party 12/8/23

John Gaston blessed our meeting and we lined up for a feast. Reggie welcomed new members Wesly and Dana Fox and told them about what the club has to offer members. Corrections to the November minutes were called for and none were forthcoming so Levan moved that they be accepted. Sandra seconded and the motion carried.

In December we award the two scholarships, Kontzen and Education. This year Larry and Diana Carby donated a week at William Holland School of Lapidary Arts and we are very grateful to them. Reggie reminded us that the winners will give a program at the November meeting on what they learned and we hope they can pass on some of their skills to interested club members. The Joe and Frances Kontzen Scholarship went to Allison Reaves and the Education Scholarship went to Casey Faulkner. Congratulations! Reggie reminded all that volunteering is the best way to earn a scholarship and have fun. Sandra followed up with stories of past members, their knowledge and antics.

Sunday, December 31st, is the 5th Sunday and therefore cabbng party day. Levan will open the doors at noon for work and fellowship but no pot luck. He also reminded everyone that the meeting isn't over until all the food, utensils, etc are dealt with.

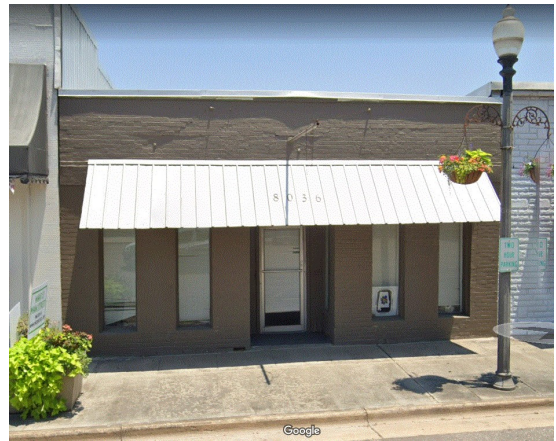
We then continued to the gift exchange and admiring the gifts. Respectfully submitted by Bunny Bolton recording secretary



# Rockhound Roundup

## Workshop News

Come visit, bring a prospective member, use the equipment, or introduce a new member to the skills and processes of lapidary at our workshop in Leeds. Workshop for members only, cost is \$5 an hour. Open (usually) on Tuesdays and Saturdays. Watch the Members-Only Facebook Page for scheduled openings and closing. To register for classes or suggest a class to Yvonne, TEXT her at 205-602-8280. Class size limited to 6.



8036 Parkway Drive in Leeds

## JANUARY



- |          |            |
|----------|------------|
| COLD     | RESOLUTION |
| FROZEN   | RUNNY NOSE |
| GLOVES   | SCARF      |
| ICICLES  | SHOVEL     |
| IGLOO    | SKIING     |
| MITTENS  | SLEDDING   |
| NEW YEAR | SNOWBALLS  |
| PENGUIN  | SNOWFLAKES |

S C S O L D F P G L O V E S R  
 K N G N E Z L E V O H S O R E  
 I L O E E O V N E S I E C I S  
 I D O W O T L G I S E K L C O  
 N L M Y B I T U T F R A C S L  
 G O W E N A S I N R E L T E U  
 Y C E A R P L N M O E F N L T  
 L O S R E R N L I Z U W G C I  
 U R U N N Y N O S E T O N I O  
 I G L O O E S N Y N U N R C N  
 S A C R G N I D D E L S F I S

© Thomas Nelson Publishers

# Rockhound Roundup

## Upcoming Shows and Events

**01/12-14/2024 – GLOBE, AZ,** Gila County Gem and Mineral Show - 01/12/2024, Gila County Fairgrounds, Globe, AZ, Fri/Sat 9:00-5:00, Sun 10:00-4:00, Website: <http://www.gilagem.org>

**1/17-21, 2024—QUARTZSITE , ARIZONA:** Wholesale and retail show; Quartzsite Improvement Association; Quartzsite Improvement Association, 225 E Ironwood; Wed. 9-5, Thu. 9-5, Fri. 9-5, Sat. 9-5; Free; Over 250 vendors in one location Full service dining options Daily Rockhounding trips; contact Nancy Nichols, (928) 927-6325; Email: [Powwow@qiaarizona.org](mailto:Powwow@qiaarizona.org)

**3/01-03/2024 ATHENS, GA** Athens Spring Gem, Mineral, Fossil, & Jewelry Show, Hours: 10 to 6 Fri & Sat, 11 to 5 Sunday, The Classic Center, Grand Hall 8, 300 N Thomas St, Athens, GA 30601 Website:

<https://www.facebook.com/events/535170507671985> Facebook:  
<https://www.facebook.com/SoutheasternMineralSpecimens/>



**Join MO!**

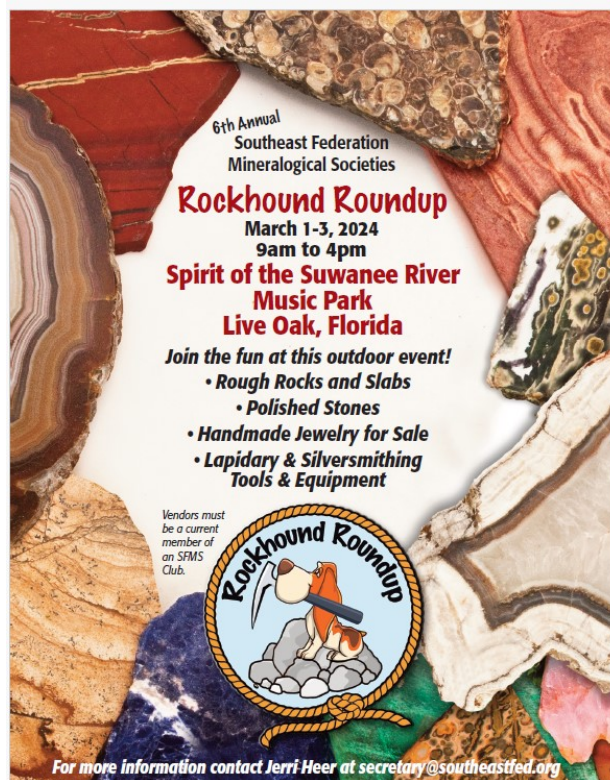
Heard about the NEW members-only Facebook but haven't joined yet? (We call it MO!) There IS a reason for it. As a member of the Dixie Mineral Council (DMC—the group that plans field trips for member clubs), our club has been told that because of insurance and liability reasons field trip info cannot be shared with non-members beforehand. Members of MO are card-carrying, dues-paying members for this reason.

**Everyone in the club has been notified by email how to join the Facebook group. To join MO, the hidden Facebook group, email [Minerallapidaryfb@gmail.com](mailto:Minerallapidaryfb@gmail.com) to request another invitation.**

### January Birthstone: GARNET



The January birthstone, **garnet**, is surrounded by folklore and was known for its healing properties. A great amount of folklore surrounds the garnet, stemming from a diverse range of cultures and time periods. One common thread is the idea that garnet protects its wearer from something—be that enemies, illness, or bad dreams! This beautiful gem's name references the bright-red pomegranate fruit, although it actually comes in a diverse range of colors. Garnets are commonly red but also come in an extraordinary range of beautiful colors, including orange, yellow, purple and vibrant green. There are even garnets that change color from blue to purple in different lighting. Some believe the true value of the garnet birthstone is its power to bring the wearer good health, wealth and happiness.



**Here's another great opportunity to add to your calendars. Applications available on club website [lapidaryclub.com](http://lapidaryclub.com)**

# Rockhound Roundup



Congratulations to Allison Reeves, recipient of the Joe and Frances Kontzen Scholarship, and Casey Faulkner, recipient of the Education Scholarship.

## Why might you consider attending William Holland or Wildacres during the SFMS Week?

The Southeast Federation of Mineralogical Societies (SFMS) sponsors weeklong classes at the William Holland Retreat in Young Harris GA and Wildacres at Little Switzerland NC.

This year Wm Holland SFMS week will be June 2-8, 2024. Here is a link to the class listing for that week. <https://www.sfmsworkshops.org/william-holland-classes>

However, William Holland School is open from April through November. Similarly SFMS will sponsor two separate weeks at Wildacres, August 12-18 & August 12-18.

The question above was asked to Rick Marshall, Director of Wm Holland and here is his answer.

“Thank you for bringing this to my attention and for forwarding it to the members of the Huntsville Club. I hope this will help, I think it will. This information is in the SFMS newsletter Lodestar, which you can download and read all recent issues from the website Please check out the Lodestar newsletters

SFMS week is different from the normal weeks at William Holland. During SFMS Weeks top priority is given to members of the SFMS. SFMS members are scheduled before anyone else. That makes it easier to schedule the class you want! In fact, you are encouraged to suggest classes for the next year in order to secure the best instructors possible. It could really benefit each club to have as many members as possible attend. This is an excellent opportunity for members to refresh their skills or learn new ones to prepare them to teach classes in the club!

Since this week is designed for SFMS members, everyone there has something in common. Friendships are made that last a lifetime. While one way to establish those friendships is in the classroom, another is through the social activities during the week. There are evening activities that include demonstrations, an auction and tailgating. Suggestions for additional activities are welcome. Remember, SFMS Weeks at either William Holland or Wildacres are designed for your club. They are fun and educational. Think of them as Summer Camp for Adults. Come join us!”

-reprinted from Huntsville Gem and Mineral Society newsletter *Rocket City Rocks & Gems*



## DMC Field Trip Sharing Program

### The Southeast Federation of Mineralogical Societies

The Friendly Federation - Founded in 1976 to serve  
[www.southeastfed.org](http://www.southeastfed.org)

**An Official Field Trip of the Tennessee Valley Rock and Mineral Society Chattanooga, TN (HOST) | An Official Field Trip of Alabama Mineral & Lapidary Society**  
**Dale Hollow Lake, Livingston, TN |**  
**Saturday, January 20, 2024 10:00 AM CST**

**No Attendance Limit, Registration Required (Link is below), No Fee**

**TRIP:** Dale Hollow is a Corp of Engineers Lake with a winter pool drop of 30 + feet. This is a shore line surface field trip. There will be multiple sites.

**COLLECTING:** Geodes of an anhydrous nature and various Mississippian marine materials will be found. Crinoid stems and conglomerates, horn corals, coral heads and chert nodules. For the most part, this is a gradual sloping shore line with easy access to sites.

**BRING:** Collecting bucket, wrapping material, warm clothes, change of clothes (may get wet), gloves, hiking boots, trowel, geology hammer, goggles, food, and water as resources will be limited.

**TERRAIN:** This is not a good site for those with ambulatory assist devices or small children as the shore is rocky and uneven in places. There is extensive parking, but it is some distance from the collecting area.

**CHILDREN (Yes):** Parental supervision required as this is a lake. There will be mud and slippery areas. Proceed with caution with young <4 age children as it is a rocky terrain and some distance from parking.

**PETS (No):** I would not bring pets as this is a lake with extensive shore line, you may be chasing pets for some distance.

**FACILITIES:** There are no facilities at the site. There is a marina nearby.

**ACCOMMODATIONS:** There are camping facilities at the site, if they are open this time of year. Check with Dale Hollow Marina.

**REGISTRATION:** Click here to fill out a registration form. Please provide the names of all of the people you are registering (including yourself) as well as a phone number and email address you want us to use for contact tracing if any attendees report testing positive for COVID-19 after the trip. If you register for this trip then test positive for COVID-19, if you are exposed to COVID-19 within 2 weeks before the trip, or if you are unable to attend the trip, please be considerate to your fellow rockhounds and let us know as soon as possible so someone on the waiting list can take your slot(s).

**DIRECTIONS AND WHERE TO MEET:** Registered participants will be sent a confirmation email with directions and meeting place details.

**CARPPOOLING:** The registration form has a place for you to indicate if you need a ride; if you can offer a ride; or if you would like to drive or share a carpool ride. If you choose any of these options, your name, email address, and club name will be shared with other members who also choose one of the options. Then, you can communicate with one another to arrange carpools.

**CONTACT:** Charlie Jones, landline 423 842-6441, cell 423-653-4479, e-mail [khunneke@comcast.net](mailto:khunneke@comcast.net)

**IMPORTANT:** DMC field trips are open only to members of clubs in the SFMS DMC field trip sharing program. SFMS DMC club members are covered by liability insurance and they are bound by the AFMS code of Ethics, but the general public is not and could jeopardize access to a collecting location. For this DMC trip, non-SFMS club members and the general public are not allowed. Please do not post DMC field trip information where the general public can access it.

# Rockhound Roundup

Clubs scheduled to host DMC Field Trips in the next 6 months

## 2024

January - Tennessee Valley Rock and Mineral Club (Chattanooga, TN)

February - Athens Rock and Gem Club (Athens, GA)

March - Georgia Mineral Society (Norcross, GA)

April - Catawba Valley Gem and Mineral Club

May - Northeast Georgia Mineral Society (Clarkesville, GA)

June - Huntsville Gem and Mineral Society (Huntsville, AL)

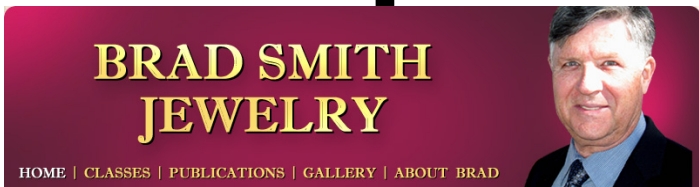
Email: [dmc@southeastfed.org](mailto:dmc@southeastfed.org)

Website: <https://www.southeastfed.org/sfms-field-trips/dmc-field-trip-program>

The Dixie Mineral Council is an official program of the SFMS.



We are an association of field trip leaders within the Southeastern Federation of Mineralogical Societies who have agreed to join together and share one of our mineral or fossil field trips.



## TESTING FOR SILVER

Often you need to identify some of those unknown "silvery" pieces of metal in the bottom of the toolbox or some piece of old jewelry that is not hallmarked. Is it silver or is it something else?

Of course, if you need to know exactly what you have, it's best to send your metals off for refining. But inexpensive silver testing solutions can be used to help distinguish higher silver content alloys from alloys that have the same appearance but with little to no silver content, like German Silver or Nickel. I purchased a half-ounce bottle of JSP Silver Testing Solution #GT41. It's not a rigorous analytic test, but it lets you know if you're on the right track. And it's inexpensive. Mine was only \$3.

With a fresh solution you have an instant reaction after applying it to the metal being tested. The procedure is simple - apply a small drop and watch for a color change. Note that the acid will leave a slight mark, so choose a spot that is out of the way or will be easy to polish.

If you suspect the object is silver plated, you should file a little notch somewhere inconspicuous to expose what metal is below the surface. Otherwise, all you test will be the surface plating.

Here's the reaction I got when testing various metals:

- . Fine silver . . . . . Red/Orange
- . Sterling silver . . . . . Brick Red
- . 80% silver 20% copper . Dark red changing to gray
- . Brass . . . . . Yellow changing to blue
- . Nickel . . . . . Gray-green
- . Copper . . . . . Yellow changing to blue
- . Steel . . . . . Black
- . Stainless Steel . . . . . No color change

Caution - If you do any of this testing, know that you are handling a reasonably strong acid. The GT41 label says it includes nitric acid and potassium dichromate. Wear safety glasses.

# Rockhound Roundup

## Mark your Calendars

January 6, 13, 20, 27	Workshop Open
January 12	Meeting
January 20	DMC Field Trip, Livingston, TN
January 25	Zoom meeting

**SAVE THE DATE: February 24, 2024. Girard, GA. DMC Field trip, hosted by Athens (GA) Rock and Gem Club. Collecting Savannah River Agates. Info to come.**

We are a member of the Southeast Federation of Mineralogical Societies (SFMS). The SFMS is a union of local clubs and societies in the Southeast States. The SFMS is one of seven regional federations within the United States. Each club within the SFMS retains their local power. Without the clubs or societies there would be no Federation, only small groups doing their own thing. The purpose of the organization is to bring about a closer relationship between clubs and societies devoted to the study of Earth Sciences and the practice of Lapidary Arts.

This and other information is from *The Lodestar*, the newsletter of the Southern Federation of Mineralogical Societies (SFMS), of which we are a member. Check out their website at [www.southeastfed.org](http://www.southeastfed.org) for articles on geology, lapidary, & rockhounding.



Rockhound RoundUp is the newsletter of the Alabama Mineral and Lapidary Society, 8036 Parkway Drive, Leeds, AL. 35094, Editor: Ivey Cook. Email: [newsletter@lapidaryclub.com](mailto:newsletter@lapidaryclub.com)